

Chapter 25 Encryption

Purpose: Prevent others from changing programs without permission.

Step 1: Click “Options” à Software Setupà Communication parametersà tick box in the front of “startup password function” and click OK, as shown in image 25-1 in below:

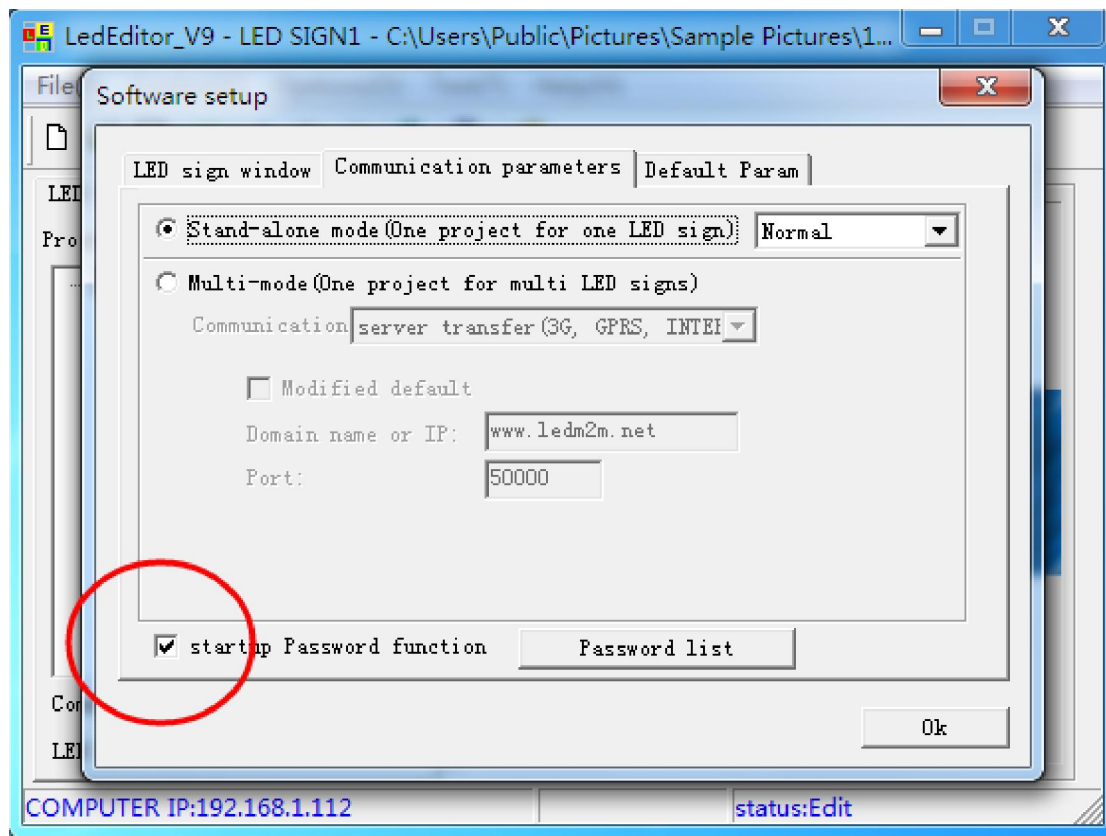


Figure 25-1

Step 2: Then back to interface, enter Hardware setup, set ID for controller and password for controller.

After press Encryption button, a tip message will show and say **add password success**.

Hardware setup

SCREEN ID:m20-314-05688

☐ Automatically obtain an IP address

☒ Use the following IP address

IP address: 192.168.1.188 Send

Subnet mask: 255.255.255.0

Default: 192.168.0.1

☐ Serial port parameter

Serial: COM_RS232 Send

Baudrate: 57600

☐ Link Server

☒ Server Domain: www.ledm2m.net Domain backup: Send

☐ Server IP: . . . Custom Name: m20-314-05688 Send

Service port: 50001 status: no

☐ Data center

Master: test Send

☒ ID config(485 serial or RF) 88 (1~239) Send FTP Configuration

☒ PASSWORD

ID[1-65535] 1 Old Key New Key ***** Re-enter ***** Encryption

☐ Other process Close

Step3, then plug your U-disk in Computer and enter software setup, open Password List and input the correct password, see figure 25-2:

ID: means led controller ID, it should be the same in Hardware setup

Customer can set a same ID for all led controllers or different ID for different controller.

Password: it should be the same with that in hardware setup, if do not know, then could not send program.

Sign' s name: name by customer itself, in order to remember the led screen.

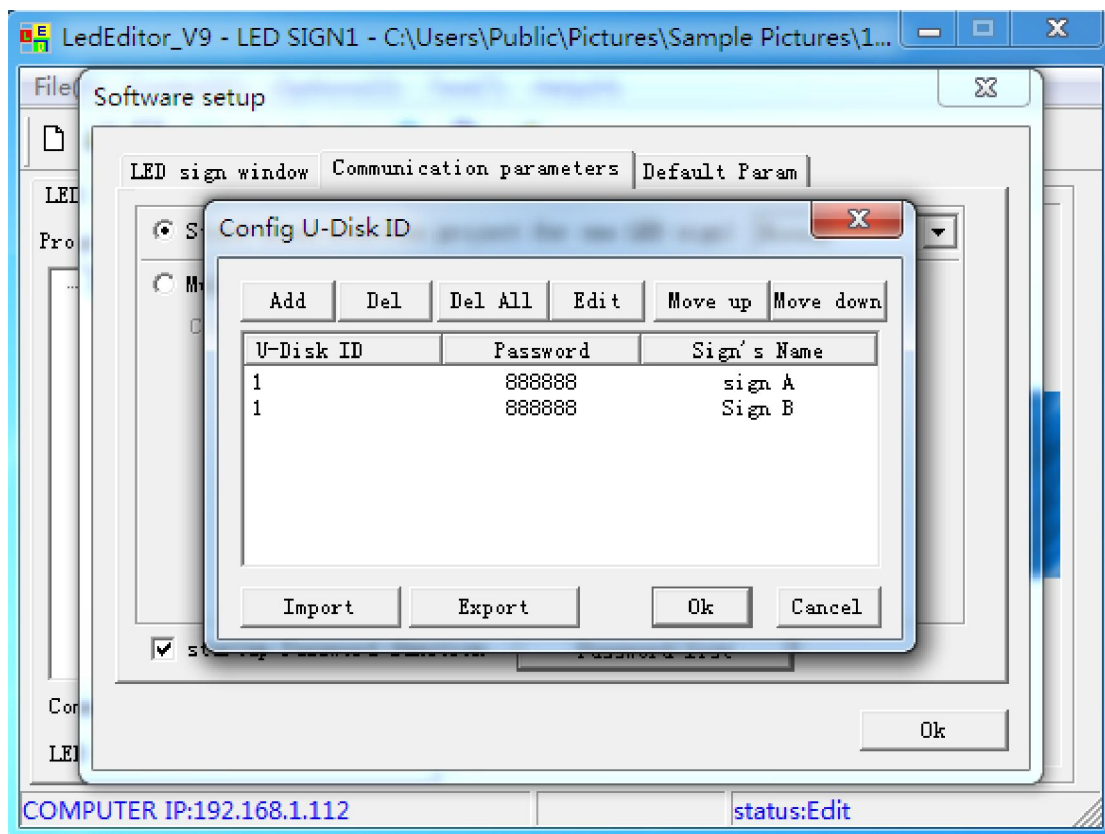
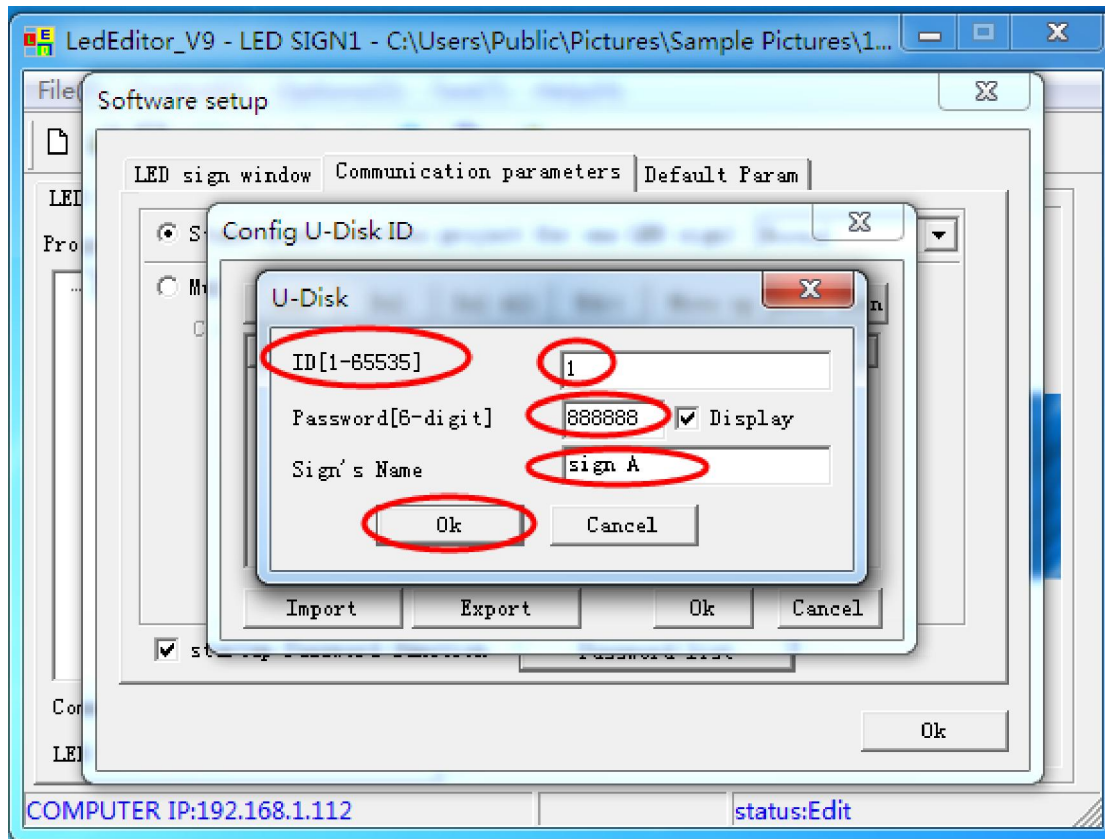
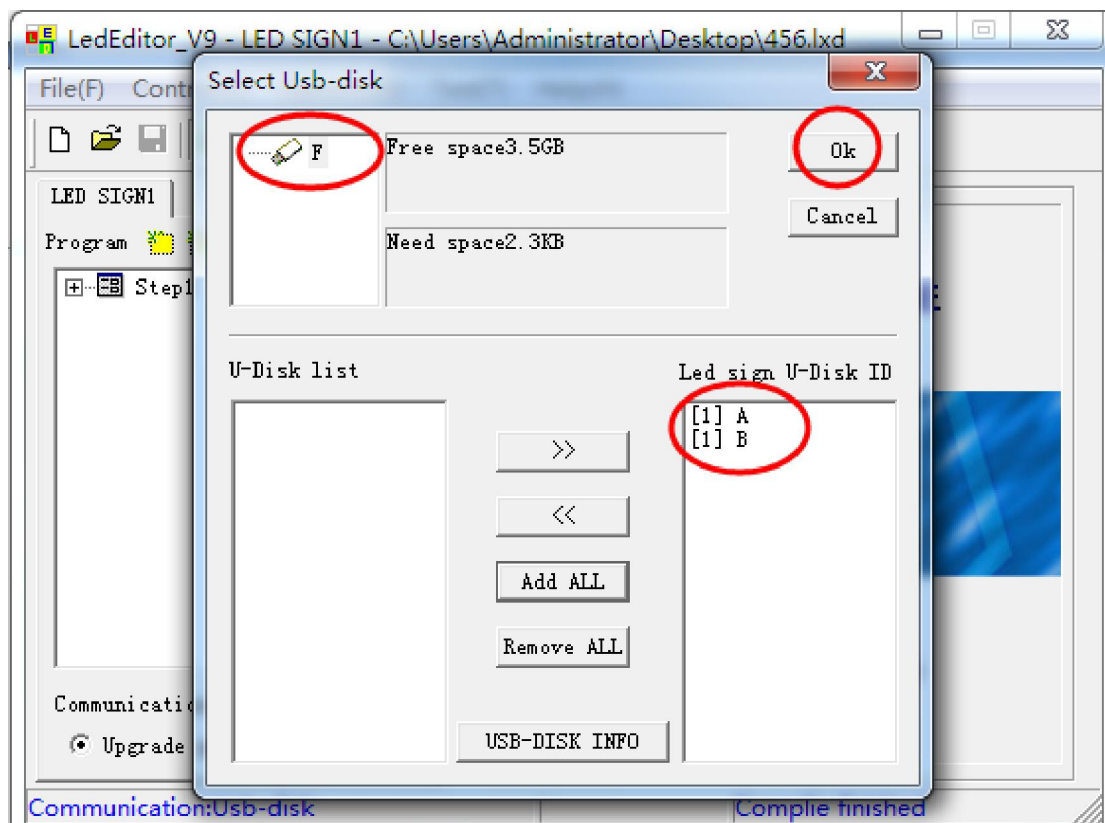
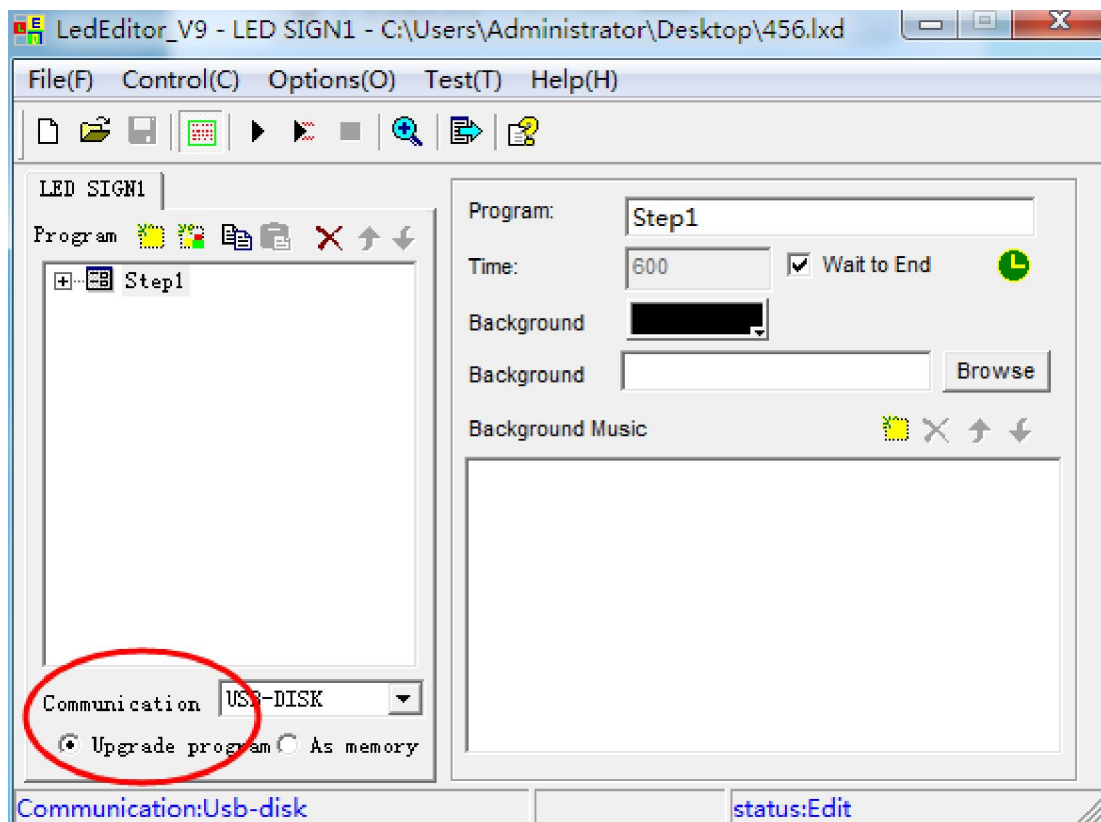


Figure 25-2

Click Send button and see following image :



How to decrypt? Click “ Options” on menuà Hardware Setup, screenshot as shown in image 25-5 in below:

The screenshot shows a 'Hardware setup' window with a title bar and a close button. At the top, it displays 'SCREEN ID: M30-110-00840' and a 'Refresh' button. The window is divided into several sections:

- IP parameter**: Includes fields for IP address (192.168.8.140), Subnet mask (255.255.255.0), and Default (192.168.0.1), each with a 'Send' button.
- Serial port parameter**: Includes a 'Serial' dropdown menu (COM_RS232) and a 'Baudrate' dropdown menu (9600), each with a 'Send' button.
- Open internet mapping port**: A checked checkbox with a port number field (500) and a range indicator (1~65535), with a 'Send' button.
- Link Server**: Includes a checked checkbox, a 'Server Domain' field (alahover.gicp.net), a 'Domain backup' field (alahover.dyndns.net), a 'Server IP' field, and a 'Custom Name' field (exhibiton screen 2), each with a 'Send' button.
- ID config(485 serial or RF)**: A checked checkbox with a value field (40) and a range indicator (1~239), with a 'Send' button.
- PASSWORD**: A section with a checked checkbox, an 'Old Key' field (*****), a 'New Key' field, and a 'Re-enter' field. The 'Old Key' field and the 'Decryption' button are circled in red.
- Other process**: A checkbox with a 'Close' button.

Figure 25-5